



Tolga State School Newsletter

SAFETY - RESPECT - RESPONSIBILITY

Main Street Tolga, QLD 4882

PO Box 100 Tolga, QLD 4882

Tel (07) 4089 5111

Absence Line (07) 4089 5166

E-mail: admin@tolgass.eq.edu.au

Web: www.tolgass.eq.edu.au

Issue Date: 6th February, 2025

STUDENT ABSENCE PROCEDURES

At Tolga school we expect all students to attend school on all school days. **Every day at school does count.** Parents or guardians of students who are absent due to illness or family matters must inform the school of their students' absences. Parents/Caregivers will be sent a text message if the students' absence is unexplained. You can reply to the text message.

If your child is absent from school:-

- Phone the School Absence Line 4089 5166 and leave a message or
- Advise the absence via QParents or
- Reply to text message when received or
- Phone school office 4089 5111

Note: Parents need to apply for an exemption if their child/ren will be away for more than 10 consecutive school days. This application form is available for collection from the school office and needs to be approved by the Principal.

If your child is leaving school early:

- Phone the school office 4089 5111 to advise reason and time of collection from the office or
- Send a note with your child to the office with the reason and time of departure

Note: Your child will be present at the office at the prearranged time for collection. Your child must be signed out before leaving school grounds.

If your child will arrive late to school (after 8:50am):

- Phone the school office 4089 5111 to advise reason and expected time of arrival

Note: Your child must present to the office prior to going to the classroom to receive a late slip which will be given to the teacher on arrival to class.

Parents to ensure the safety of your children please make certain they understand afterschool pick up arrangements. Supervised Parent Pick Up is located under A Block on Main Street until 3:20pm. If existing arrangements do change please ring the school office 4089 5111, before 2:30pm, so the message can be relayed to your child in plenty of time.

Please advise the office if you or anyone listed as an emergency contact for your child, have had a change of contact details!

Please phone the school office or email admin@tolgass.eq.edu.au any changes to your contact details. This **includes** home address, email address and **IMPORTANTLY** your contact home phone/work phone and mobile number/s. Also advise any changes for those listed as emergency contacts for your child/ren.

School Calendar

P&C Meeting 7pm Tolga Hotel Meeting Room	10/02
Yrs 4 & 5 Tablelands Sports Spectacular	19/02
TEEC Leaders Camp	26/02 to 28/02
Student Leadership Parade Undercover Area 9am	03/03
NAPLAN	12/03 to 24/03
Mulungu Health Hearing Screening	24/03
TSS Cross Country	28/03
TSS Anzac Parade	03/04
Easter Hat Parade	04/04
Last day of Term 1	04/04
First day of Term 2	22/04



Tuckshop Roster

Mon	10/02	Peta
Tues	11/02	Peta
Wed	13/02	Simone
Thu	14/02	Renee
Fri	15/02	VOLUNTEER NEEDED
Mon	17/02	Peta
Tue	18/02	Peta
Wed	19/02	Peta
Thu	20/02	Kirsty
Fri	21/02	VOLUNTEER NEEDED

**P&C GENERAL MEETING
ALL WELCOME**

**7pm, Monday, 10th February
Venue: Tolga Hotel Meeting Room**

PRINCIPAL'S REPORT

Dear Staff, Students, Parents, Carers and Community members,

Welcome back to the 2025 school year and a special mention to all our new families and students, joining the Tolga SS family this year too.

Whilst the weather has been a little unpredictable and may be impacting on some, I am pleased to report that it is business as usual here at school. I have been so impressed with the students and staffs ability to jump back into calm, organised learning. As for our new prep students, whilst it can be a huge event starting school and there were a few tears, I am also happy to report that students are settling in nicely and making friends and enjoying all that school-life has to offer.

This year we have a few changes to classrooms and roles within the school;

We welcome Mr Mark Molloy who is our Grade 5/6 teacher. Unfortunately Mr Molloy has been battling some poor health but will back shortly firing on all cylinders and ready for a great year.

Mrs Juleen Wockner has returned from long service leave and joined our Student Support Team as our Specialist Education Teacher. Juleen will be ensuring our students and staff are well supported in class, as well as coordinating data, tracking of students, and providing intervention to those who may need some extra help. This is a small snapshot of the extensive work she does within the school, and we are very excited to have her leading this work in our school.

Ms Joycee Riches has taken on the role of Student Engagement Officer which focuses on building our Positive Behaviour for Learning (PBL) framework within the school. This entails promoting positive behaviour by working with staff and students and helps to develop safe and supportive learning environments. This work will also support students who require additional education around safe, responsible and respectful behaviour. Joycee will also be ensuring we celebrate students who can independently demonstrate these expectations.

PRINCIPAL'S REPORT continued...

Whilst Mrs Monique Lanskey is not new to the Support Teacher, Literacy and Numeracy (STLaN) role, we welcome her back to full-time work this year. The STLaN ensures students are successfully tracked and monitored and their learning is tailored to their needs. She also runs our Reading Program, designs Individual Curriculum plans (ICPs) with staff and parents and provides targeted lessons for some students working above their achievement levels. Again, this is just a short synopsis of the wonderful work she does across our school.

I have attached the school organisational chart for your information. This provides some clarity of work for staff and parents regarding line management and who is working in certain areas. As always, the first port of call is the classroom teacher. Class teachers are working directly with your student and are open to questions and queries. Please keep in mind that from 8:30am until 3:00pm it is core learning time where students need to be able to access their teachers. If you wish to chat with teachers, please find a time outside this period to meet, email or take a phone call. Often staff won't get to emails until after their teaching day so if you do not hear back from your child's teacher immediately, they will respond as soon as they are able to and within 2 working days.

Save the date—we are excited to host our Student Leadership Ceremony at a special parade on Monday, 3rd March at 9:00am. We hope you will join us for this special event.

Lastly, we have our first P & C meeting next Monday, 10th February at 7pm at the Tolga Pub. We would love to have some more parents join our group. The P & C meeting is a great opportunity to hear about what is going on at the school first-hand and also to look at ways to support student learning and fun through Fundraising and activities. We hope you can join us.

Yours in Education

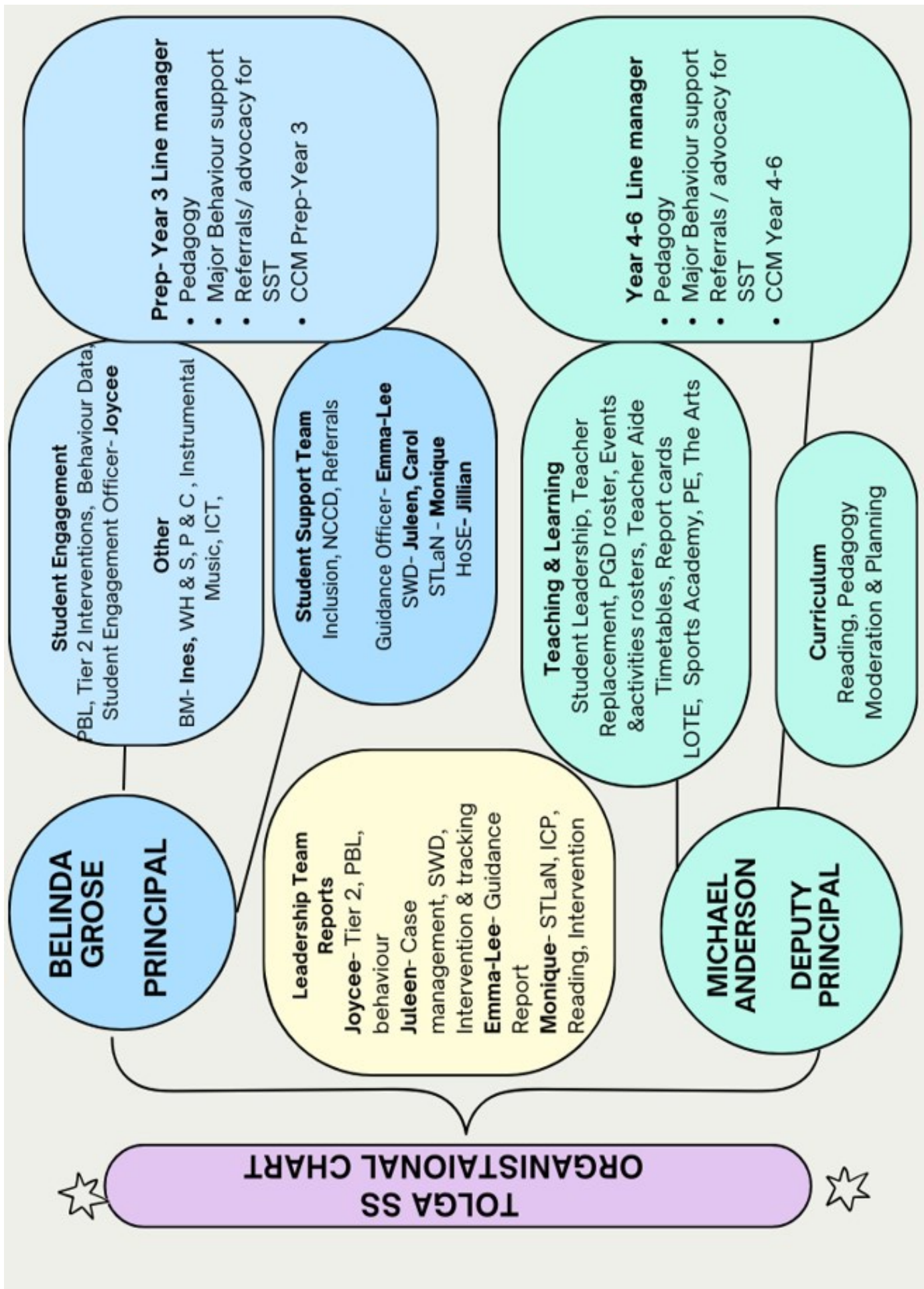
Belinda Grose
Principal



LOOK • LISTEN • REPORT



PRINCIPAL'S REPORT continued...



WHAT SORT OF START IS YOUR CHILD GETTING?

Just a little late doesn't seem much but...

They are missing just...	That equals	Which is	and over 13 years of schooling that's...
10 minutes per day	50 minutes per week	Nearly 1 ½ weeks per year	Nearly ½ a year
20 minutes per day	1 hr 40 mins minutes per week	Over 2 ½ weeks per year	Nearly 1 year
30 minutes per day	½ Day per week	4 weeks per year	Nearly 1 ½ years
60 minutes per day	1 Day per week	8 weeks per year	Nearly 2 ½ years

Your child's best learning time is the start of the school day. That's when every minute counts the most!

SCHOOL STARTS AT 8:30AM



Let's work together to ensure your child attends school on time every day.

If you arrive after 8:55am don't forget to get a late slip from the office.

POSITIVE BEHAVIOUR FOR LEARNING

At Tolga State School, we're proud to be a Positive Behaviour for Learning (PBL) school!

PBL is a research-backed approach that supports positive behaviour throughout our school. It helps improve student outcomes, boosts wellbeing for both staff and students, and reduces behavioural challenges.

We're all about creating a positive, supportive environment where everyone can thrive!

Positive Behaviour for Learning (PBL)

Department of Education

What is PBL?

PBL is short for **Positive Behaviour for Learning**.

PBL is a plan for schools to



- be a positive place to learn



- teach students how to behave at school



- tell students when they do the right thing



- help students when they make mistakes



- work together with parents.

To find out more about PBL

contact your school or [regional office](#).



POSITIVE BEHAVIOUR FOR LEARNING

This week's focus: **Be Respectful**

Why is this important?

So that we can:

- Feel safe
- Feel included
- Help others to feel safe and included



How can we do this?

- BEING KIND TO PEOPLE
- LOOKING AFTER PLACES
- LOOKING AFTER THINGS

SAFETY - RESPECT - RESPONSIBILITY

SCHOOL NEWS

WHERE DO OUR STUDENTS PLAY?

PREP- YEAR 1

Prep and Year 1 students have a dedicated playground where they can learn and grow through play-based activities. Year 1 students have access to the library at lunchtimes and the UCA too.

YEAR 2 & 3

Students in Years 2 & 3 have a designated playground along with the lower basketball court and small area for playing soccer and ball sports. Students can also access the UCA and library too

YEARS 4, 5 & 6

Students in Years 4, 5 & 6 have the UCA, oval and access to the handball courts and library



A LITTLE HEADS UP

THE PLAYGROUNDS ARE OUT
OF BOUNDS BEFORE AND
AFTER SCHOOL



STUDENTS NEED TO WAIT IN THE UCA
BEFORE SCHOOL
AND AFTER SCHOOL IN THE
DESIGNATED AREA UNDER A BLOCK



SCHOOL NEWS



Drop off and pick up times can be very, very busy times for schools. We remind our school community to be extra vigilant within school zones by adhering to the speed limits and zone regulations. Vehicles within the drop off area should not spend longer than the designated time identified on the signs: '2 MINS MAX'. This zone receives quite a lot of traffic and can be impacted by long term parking.



Our centre median strip is our designated long term parking area. Within this area parents can park and lock up. We do encourage parents to cross the road with their children - particularly the younger ones - so we can be kept safe as there is no pedestrian crossing on this street.

We thank all parents and community members for observing the rules and being extra vigilant in our school zones.



NAPLAN 2025

Information for parents and carers



Why do students do NAPLAN?

The National Assessment Program – Literacy and Numeracy (NAPLAN) is a literacy and numeracy assessment that students in Years 3, 5, 7 and 9 sit each year. It is the only national assessment all Australian students have the opportunity to undertake.

As students progress through their school years, it is important to check how well they are learning the essential skills of reading, writing and numeracy.

NAPLAN assesses the literacy and numeracy skills that students are learning through the school curriculum and allows parents/carers to see how their child is progressing against national proficiency standards.

NAPLAN is just one aspect of a school's assessment and reporting process. It does not replace ongoing assessments made by teachers about student performance, but it can provide teachers with more information about students' educational progress.

NAPLAN also provides schools, education authorities and governments with information about how education programs are working, and whether young Australians are achieving important educational outcomes in literacy and numeracy.

Your child will do the NAPLAN tests online

Online NAPLAN tests are designed to provide precise results and are engaging for students. The tests are tailored (or adaptive), which means that each test presents questions that may be more or less difficult depending on a student's responses. This helps students remain engaged with the assessment.

Tailored testing allows a wider range of student abilities to be assessed and measures student achievement more precisely. A student's overall NAPLAN result is based on both the number and complexity of questions they answer correctly. Your child should not be concerned if they find questions challenging; they may be taking a more complex test pathway.

All Year 3 students will continue to complete the writing assessment on paper.

What does NAPLAN assess?

NAPLAN assesses literacy and numeracy skills that students are learning through their regular school curriculum.

Students sit assessments in writing, reading, conventions of language (spelling, grammar and punctuation) and numeracy. The questions assess content linked to the Australian Curriculum: English and Mathematics.

All government and non-government education authorities contribute to the development of NAPLAN test materials.

To find out more about NAPLAN, visit nap.edu.au.

Participation in NAPLAN

NAPLAN is for all Year 3, 5, 7 and 9 students. ACARA supports inclusive testing, so all students have the opportunity to participate in the National Assessment Program.

Information on adjustments available for students with disability who have diverse functional abilities and needs is provided in the [National protocols for test administration](#).

Schools should work with parents/carers and students to identify, on a case-by-case basis, reasonable adjustments required for individual students with disability to access NAPLAN.

To help inform these decisions, you may consult the National protocols for test administration (linked above), [NAPLAN public demonstration site](#), the [Guide for schools to assist students with disability to access NAPLAN](#), and our [series of videos](#) where parents/carers, teachers and students share their experiences in using NAPLAN adjustments.

In exceptional circumstances, a student with a disability that severely limits their capacity to participate in the assessment, or a student who has recently arrived in Australia and has a non-English speaking background, may be granted a formal exemption.

Your school principal and your local test administration authority can give you more information on adjustments for students with disability or the process required to gain a formal exemption.

What if my child is absent from school on NAPLAN test days?

Where possible, schools may arrange for individual students who are absent at the time of testing to complete missed tests at another time during the school's test schedule.

What can I do to support my child?

Students are not expected to study for NAPLAN. You can support your child by letting them know that NAPLAN is a part of their school program and reminding them to simply do their best. Some explanation of NAPLAN is useful to help students understand and be comfortable with the format of the tests; however, it is not necessary for parents/carers to do this. Teachers will ensure students are familiar with the types of questions in the tests and will provide appropriate support and guidance.

ACARA does not recommend excessive preparation for NAPLAN or the use of services by coaching providers.

See the types of questions and tools available in the online NAPLAN assessments at [NAP – Public demonstration site](#).

How is my child's performance reported?

From 2023, NAPLAN results are reported against proficiency standards. There is a standard for each assessment area at each year level. Proficiency standards provide clear information on student achievement. They are set at a challenging but reasonable level expected of the child at the time of NAPLAN testing, based mainly

on what has been taught in previous years of schooling. Student achievement is shown against 4 levels of proficiency: Exceeding, Strong, Developing and Needs additional support.

A NAPLAN individual student report will be provided by your child's school later in the year. If you do not receive a report, you should contact your child's school.

How are NAPLAN results used?

- Students and parents/carers use individual results to discuss progress with teachers.
- Teachers use results to help identify students who need greater challenges or extra support.
- Schools use results to identify strengths and areas of need to improve teaching programs, and to set goals in literacy and numeracy.
- School systems use results to review the effectiveness of programs and support offered to schools.
- The community can see information about the performance of schools over time at [myschool.edu.au](#).

Where can I get more information?

For more information about NAPLAN:

- contact your child's school
- contact your local test administration authority at [nap.edu.au/TAA](#)
- visit [nap.edu.au](#)

To learn how ACARA manages personal information for NAPLAN, visit [nap.edu.au/naplan/privacy](#).

NAPLAN timetable

The NAPLAN test window is 9 days. This is to accommodate schools that may not have the capacity to complete the tests in a shorter time frame. **The NAPLAN test window starts on Wednesday 12 March 2025 and finishes on Monday 24 March 2025.** Schools will schedule the tests as soon as possible within the testing window, prioritising the first week.

Test	Scheduling requirements	Duration	Test description
Writing	Year 3 students do the writing test on paper on day 1 only. Years 5, 7 and 9 writing must start on day 1 (schools must prioritise completion of writing on day 1, with day 2 only used where there are technical/logistical limitations).	Year 3: 40 min Year 5: 42 min Year 7: 42 min Year 9: 42 min	Students are provided with an idea or topic called a writing stimulus (or prompt) and asked to write a response in a particular genre (narrative or persuasive writing).
Reading	To be completed after the writing test.	Year 3: 45 min Year 5: 50 min Year 7: 65 min Year 9: 65 min	Students read a range of informative, imaginative and persuasive texts, and then answer related questions.
Conventions of language	To be completed after the reading test.	Year 3: 45 min Year 5: 45 min Year 7: 45 min Year 9: 45 min	Students are assessed on spelling, grammar and punctuation.
Numeracy	To be completed after the conventions of language test.	Year 3: 45 min Year 5: 50 min Year 7: 65 min Year 9: 65 min	Students are assessed on number and algebra, measurement and geometry, and statistics and probability.

SCHOOL NEWS



parentline
parentline is a service of yourtown



Free, non-judgmental, confidential counselling

Phone, Email or WebChat

1300 30 1300

8am-10pm

parentline.com.au

8am-9pm



Kids do better when parents feel supported.

SCHOOL NEWS

<https://www.bpoint.com.au/payments/dete>

**Payment of
school invoices
using BPoint**

BPOINT
Bill Payment

Online Card Payment

CRN: 1234567891234

Invoice No 20447

Please pay each invoice individually. Invoices can be paid by card via BPoint.

<https://www.bpoint.com.au/payments/dete/>

The BPOINT **Web Link** at the bottom of the invoice is hyperlinked with information from the invoice.

Once the customer clicks on the link the BPOINT page opens up and pre-fills all the required information.

**TSS' s PREFERRED
METHOD OF
PAYMENT**

BPOINT
Receivables Solution

Supported by the
Commonwealth Bank

Make a BPOINT Payment

Biller Code: 9002534 (Department of Education And Training)

Customer Reference Number: 1234567891234

Invoice Number: 20447

Student Name (Maximum 20 characters): James Richardson

Amount (AUD):

Select your payment option:

VISA **MasterCard** **MemberPass**

**All the required
information is
pre-filled.**

**Customers enter
the amount they
wish to pay and
their payment
method**

PRE-POPULATION OF INVOICE DETAILS

TAX INVOICE

INVOICE NUMBER: 1234567891234
INVOICE DATE: 18-Apr-2017
INVOICE REF: 1234567891234
ORDER NUMBER: 1234567891234

Page 1 / 1

Item Description	Quantity	Unit Price	Net Amount
Item Description	1.00	21.00	21.00
Sub Total			21.00
GST TOTAL			21.00
INVOICE TOTAL			21.00

PAYMENT METHODS

BPOINT
Bill Payment

Online Card Payment

CRN: 1234567891234

Invoice No: 20447

Please pay each invoice individually. Invoices can be paid by card via BPoint.

<https://www.bpoint.com.au/payments/dete/>

BPOINT
Bill Payment

Online Card Payment

CRN: 1234567891234

Invoice No 20447

Please pay each invoice individually. Invoices can be paid by card via BPoint.

<https://www.bpoint.com.au/payments/dete/>

**Customers can click
on the BPOINT link
at the bottom of the
invoice**



Simplify your school life.

We have partnered with Flexischools, to make school lunches even easier.



1

Order online
at anytime

2

Easily monitor your
child's nutrition

3

Pay with Visa,
Mastercard, PayPal
or direct deposit

Set up your account

1 Download the Flexischools App

Note: for iPhone and iPad please select 'Allow' notifications.

2 Login/Register

- **Already a Flexischools user –**
Enter your details and login.
To save your login details select 'remember me'.
- **New Flexischools user –**
Click '**Register**', enter your email address and follow the instructions in the email to set up your account. Once your account is set up, add new student; search for their school, enter student details and select their class.

3 Top Up Your Account

To make ordering fast and simple, you can set up automatic top ups.

Order

1 Place your Order

In the Flexischools App, click the '**Order now**' button located in the bottom right-hand corner of the app and select your student.

2 Make your Selection

Select the items you wish to order.

3 Make Payment

Select your payment option and complete payment to place your order.

Alternatively you can sign-up at **flexischools.com.au**



10 years supporting
the school community



Committed to healthy eating



Over 1,500 happy schools

 **flexischools**

TUCKSHOP TALK



TOLGA STATE SCHOOL P&C TUCKSHOP MENU

FIRST (BIG) LUNCH: 11:00AM
SECOND LUNCH: 1:20PM



TOLGA STATE SCHOOL TUCKSHOP & P&C

MONDAY

Croissants \$5.50

TUESDAY

Sushi, Chicken or Vege \$5.50

WEDNESDAY

Burgers: Chicken or Beef \$7.00

THURSDAY

Taco's \$5.50

FRIDAY

Hot Diggity Dogs! \$6.00

FRESH FOODS

Salad Bowl	From \$4.00
Chicken Caesar Salad	\$7.50
WRAPS	\$7.50
-Sweet Chilli chicken: tenders, salad & Philly cheese.	
-Caesar: tenders, egg, bacon, lettuce, Caesar dressing.	
SANDWICHES-White/Wholemeal	\$3.50
GLUTEN FREE BREAD- \$1.20 extra	
Extras: Lettuce, Tomato, Beetroot, Cheese, Corn	\$5.00
Extras: Ham, Salami	\$1.00
Extras: Chicken	\$2.00
Extras: Salad Dressing/Mayo/Sweet Chilli	\$4.00
Get your Sandwich TOASTED at no extra charge!	

DRINKS

Plain Milk 300ml	\$3.00
Bottled Water	\$2.50
Milk Popper (Chocolate, Strawberry)	\$3.00
Juice Popper	\$3.00
Plain Milk 300ml with Flavoured Straw*	\$3.50
Flavoured Milk 300ml (Chocolate or Strawberry)	\$3.50
*Straw flavours to choose from: (when available!)	
Choc Mint/Chocolate/Strawberry/Cookies & Cream/	
White Chocolate/Caramel/Marshmallow/Vanilla	

HOT FOOD

Sausage Roll	\$4.50
Beef Lasagne	\$6.00
Meat Pie	\$5.50
Fresh Beef Pasta + Garlic Bread (gluten free available)	\$7.00
Pizza	\$5.00
Sauces (Tomato/BBQ) 40c	Spork 10c

SNACKS!

Apple Slinky or Boiled Egg	\$1.50
Chocolate Muffin	\$2.00
Frozen Bulla Yoghurt	\$3.50
Frozen Yoghurt Twisted Watermelon	\$3.50
Gingerbread Student	\$3.50
SNACK PACK (Lamington Cheese Crackers & Sultanais)	\$4.00
Donuts	\$4.00

BIRTHDAY BUCKET

An Ice Block for the Birthday Student's whole class \$15.00
Please order by 4pm the day prior 😊

ORDERS CAN BE MADE ONLINE VIA THE FLEXISCHOOLS APP OR WEBSITE
(BY 8:30AM FOR SAME DAY ORDERS)
OR CASH OVER THE COUNTER
MON/TUES/WED/THURS/FRIDAY 8:30AM - 1:30PM



flexischools

VOLUNTEERS WELCOME!!

KEEP UP TO DATE ON FACEBOOK OR THE
SCHOOL NEWSLETTER
CONTACT US! 07 4089 5111
TOLGASTUCKSHOP@GMAIL.COM

TEACHER LUNCHES:

WRAPS, PANNINI'S, SALADS, QUICHE AND SALAD,
PUMPKIN SOUP AND GARLIC BREAD. ALL \$8.00



TOLGA STATE SCHOOL PARENTS & CITIZENS (P&C) ASSOCIATION



UNIFORM SHOP

Orders can be made Online via the FLEXISCHOOLS App or Website (by 4:00pm for Next Tuckshop Day Pickup) or Cash/efpos over the Tuckshop counter Monday-Friday 8:30am - 1:30pm.

UNIFORM ITEMS FOR SALE:

Purple School Shirt (Size 4-18)	\$40.00	Hair Ties (Variety Colours)	\$5.00
Sports Shirt (Tandara Green or Tinaroo Blue) (Size 4-18)	\$40.00	Chair Bags (One Size)	\$12.00
Black Shorts (Size 6-14)	\$20.00	Library Bags (One Size)	\$14.00
Black Skorts (Size 4-12)	\$20.00	Headphone Bags (One Size)	\$10.00
Black & Gold Jacket (Size 4 only)	\$10.00	Old Style Sports Shirts (Size 4-18)	\$10.00
Black Fleece Jumper (Size 6-14)	\$35.00		
Hats (Size M&L)	\$20.00		

WHAT WE DO

Tolga State School's Parents and Citizens' (P&C) association works in partnership with our school's principal, our student parents and the community to promote the interests of the school, and facilitate its development and further improvement, to achieve the best possible outcomes for students!

We are able to provide feedback and advice on school policies and activities, assist in providing resources to enhance student outcomes and are involved in a variety of school activities including fundraising, school functions, our tuckshop and school uniform decisions, ordering and sales.

HOW CAN I GET INVOLVED

We LOVE parents of students to be involved with your P&C and help shape the future of our school! Whether it's volunteering in the Tuckshop, fundraising, helping run events or putting forward ideas and suggestions it all helps!

We hold our meetings on the 2nd Monday of each Month at 7pm - We look forward to welcoming you!

OSHC—Camp Australia

Discover how Outside
School Hours Care
(OSHC) can support
your family!

Join our upcoming virtual info session
to learn about our programs, including
the activities we offer, the benefits for
children and parents, and how OSHC can
fit seamlessly into your family's routine.

**Your
OSHC.**

Before School
After School
Pupil Free Days



**Virtual Info
Sessions!**



Learn more about our program and what's
on in Term 1. Get details on registration,
bookings, subsidies and more.

Tue **11 Feb** 2025

7:00pm

Reserve your
spot now



[www.campastralia.com.au/
virtual-info-sessions](http://www.campastralia.com.au/virtual-info-sessions)



Find out more
campastralia.com.au

Missed the session?

Visit your school's friendly
coordinator or email us at
oshc@campastralia.com.au

by  **Camp
Australia**

OSHC—Camp Australia

Outside School Hours Care

Newsletter

Week 3 & 4

Tolga State School OSHC



Your
OSHC.



Kindness
Week **Disco**
in After School Care



21 Feb

Book now

Welcome Back to School!

We are thrilled to welcome all families back after the Christmas holidays! We hope you had a wonderful time and feel refreshed and rejuvenated. For those new to our community, we warmly invite you to come and meet us. We're excited to get to know you!

Over the next two weeks, we have some fantastic program themes lined up. Week Three will bring us Wacky Weather Week, a time to dive into the wonders of weather. Kids will engage in hands-on activities such as making rain in a jar, creating rain-stick sensory bottles, and expressing their artistic flair through rainbow art. We can't wait to see the imaginative projects that will come to life!

Week Four will be themed around Egypt Week and Kindness Week, offering a unique blend of cultural exploration and social awareness. Activities will include the creation of Egyptian headdresses and masks, allowing children to delve into the rich history and traditions of ancient Egypt. Additionally, we will implement group kindness activities aimed at promoting empathy and cooperation among peers. To culminate this enriching experience, we will host a lively disco party at after school care on Friday, providing a joyful celebration of friendship!

Activities coming up

- Rain In a Jar Experiment
- Rain-stick Sensory Jars
- Egyptian Headdresses
- Kindness Games

Make a booking

Join in the fun of Outside School Hours Care activities and experiences with Your OSHC and Rocketeers.

Book now

Register free and book in 24/7 via our app

To attend our program, you must register your child. You can register an account with us at pp.campaustalia.com.au or by downloading our Camp Australia smartphone app from the Apple App Store or on Google Play. Once registered, it's easy to make bookings and manage your account.



Find out more and book now at www.campaustalia.com.au

Your
OSHC.

Kindness Week

Be the
“i” in 
kind

17-21^{Feb} in
Before & After
School Care

Plus, join
us for a
fun-filled



disco

to celebrate kindness!

Friday 21 February

Book
now

campaustalia.com.au

by  Camp
Australia

COMMUNITY NOTICES



ATHERTON TABLELAND
HOCKEY ASSOCIATION



2025 HOCKEY SEASON

FREE COME & TRY DAY
SATURDAY 8TH MARCH
10AM - 11.30 AM

FREE SAUSAGE SIZZLE
& LOLLY CHASE



SEASON COMMENCES
SATURDAY | MARCH 15TH

MINKIES - UP TO 9 YEARS **\$120.00**

ALL MINKIES GET A FREE FROZIE CUP EACH GAME DAY

ALL NEW TO HOCKEY MINKIES REGISTRATIONS GET
A FREE STARTER PACK - (STICK / SHIN PADS / BALL)

JUNIORS 10-18 YEARS **\$200.00**

STUDENT 19-24 YEARS **\$235.00**

LADIES **\$305.00**

WALKING HOCKEY **TBA**



FAIR PLAY VOUCHERS ACCEPTED
CLUB SHIRT INCLUDED IN YOUR FEES!!!